

# DewK 1620A Temp & RH Setup with COMPASS for Pressure (or Flow) Enhanced

Press [Setup], <Support Device> to open the Support Device Editor.

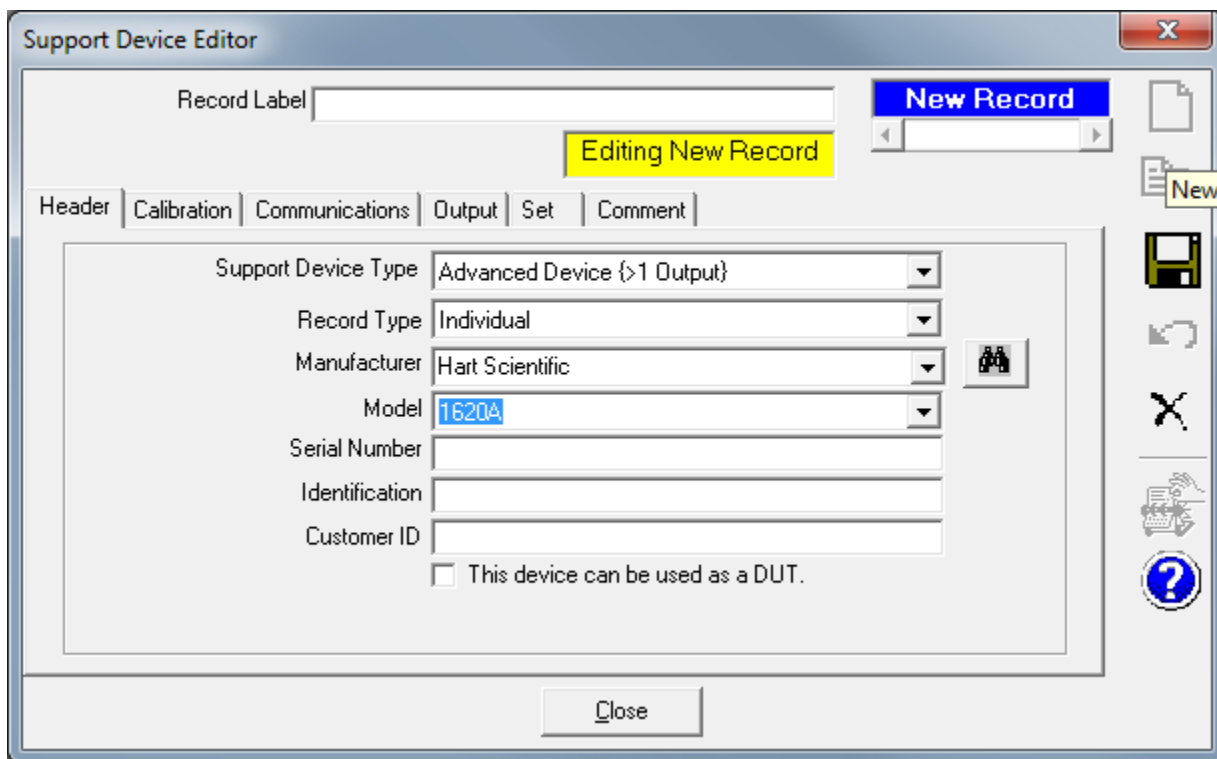
Click the blank white sheet of paper icon (at top right) to make a new item.

Choose Hart Scientific for Manufacturer and 1620A for Model. If you can't find these go to next page.

Click on the binoculars icon (Find Previous Setup).

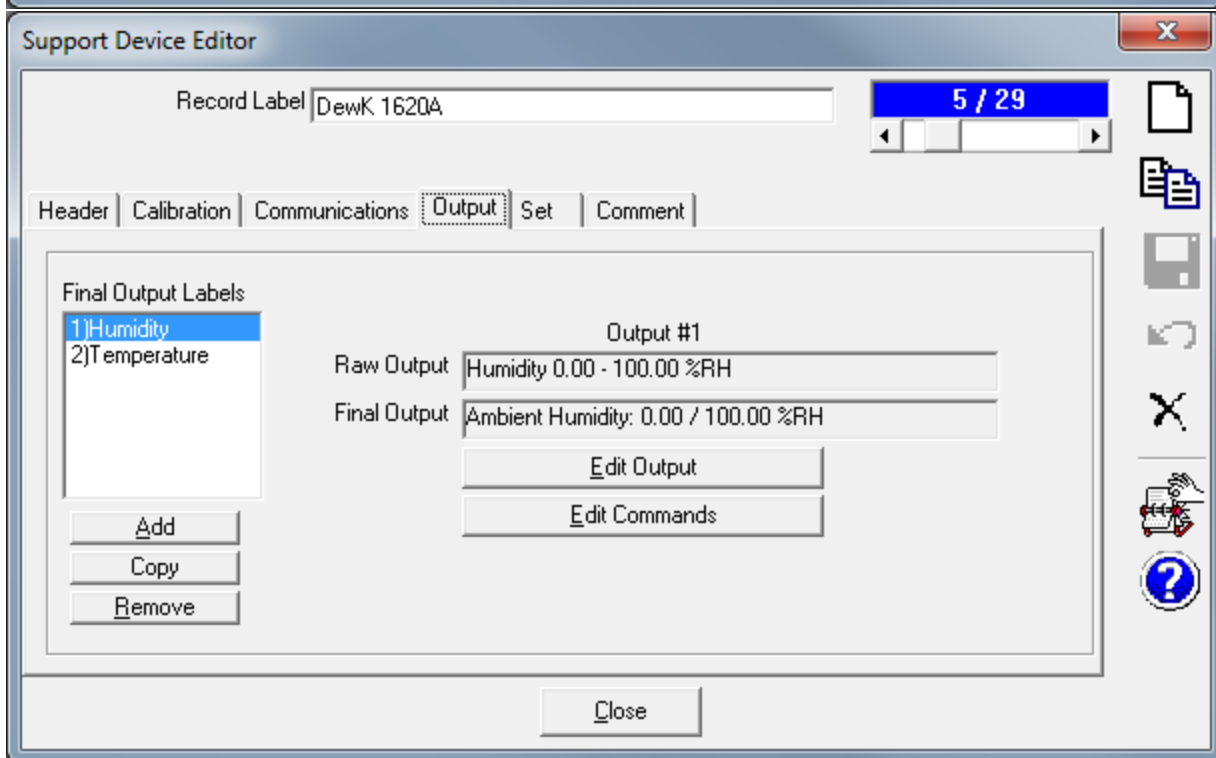
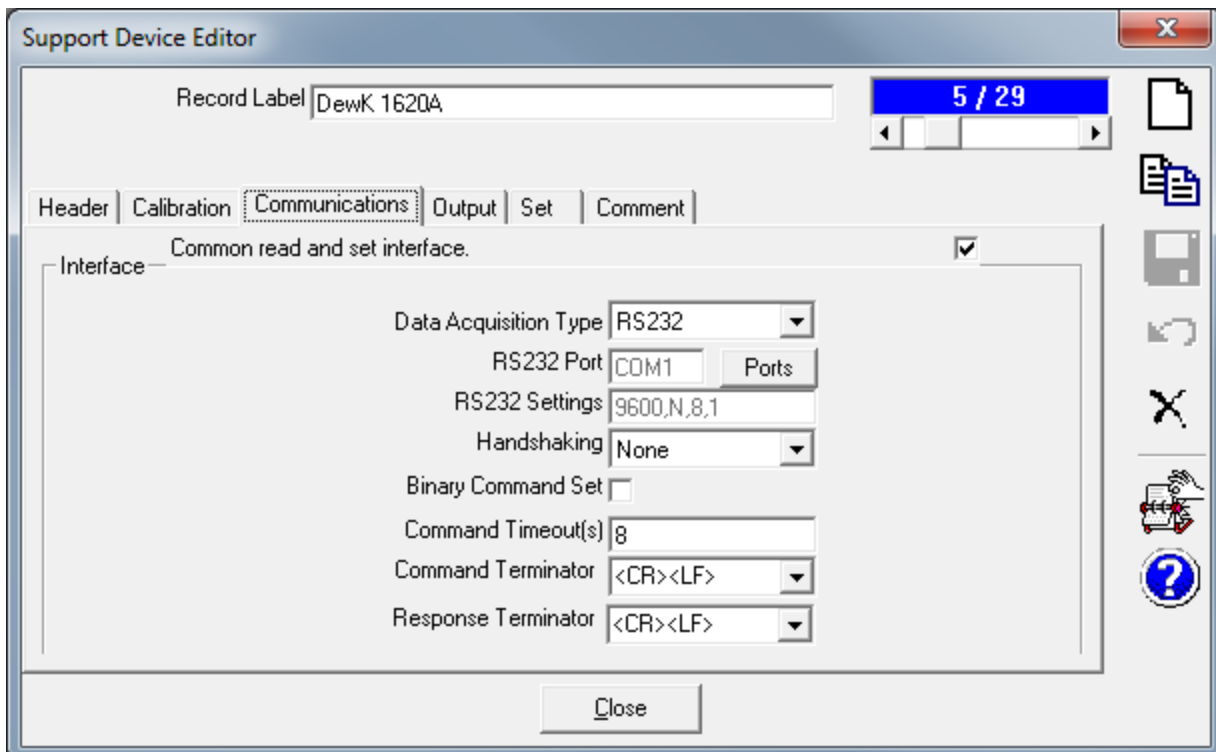
Double-click on the matching line in the next window.

Press [OK] to acknowledge that you will have to verify the outputs and communications.



Check and edit as necessary other tabs, particularly the Communications and Output tabs.

There are two outputs; 1 for Temp, other for humidity. You can choose these when you are in the Test Editor or initializing a COMPASS test. You can set them as default devices in the [Setup, <Default Hardware Configuration> window.



Output Relationship

Raw Output | Final Output | Tolerance

Required Raw Outputs to determine Final Output:  [v]

Output Type: Humidity [v]    %RH [v]

Output Source: RS232 [v]

Minimum: 0.00

Maximum: 100.00

Resolution: 0.01 [v]

Raw Output to Final Output Relationship: Same (Raw Output = Final Output) [v]

[?]    [OK]    [Cancel]

Output Relationship

Raw Output | Final Output | Tolerance

Label: Humidity

Output Type: Humidity [v]

Final Output: Ambient Humidity [v]

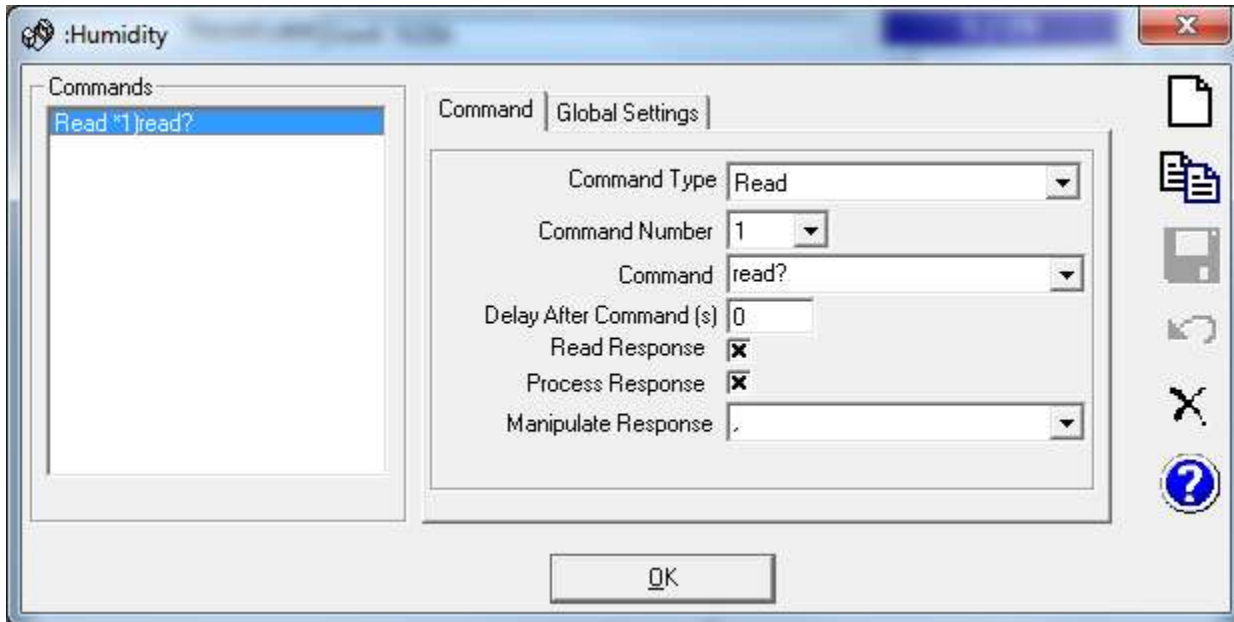
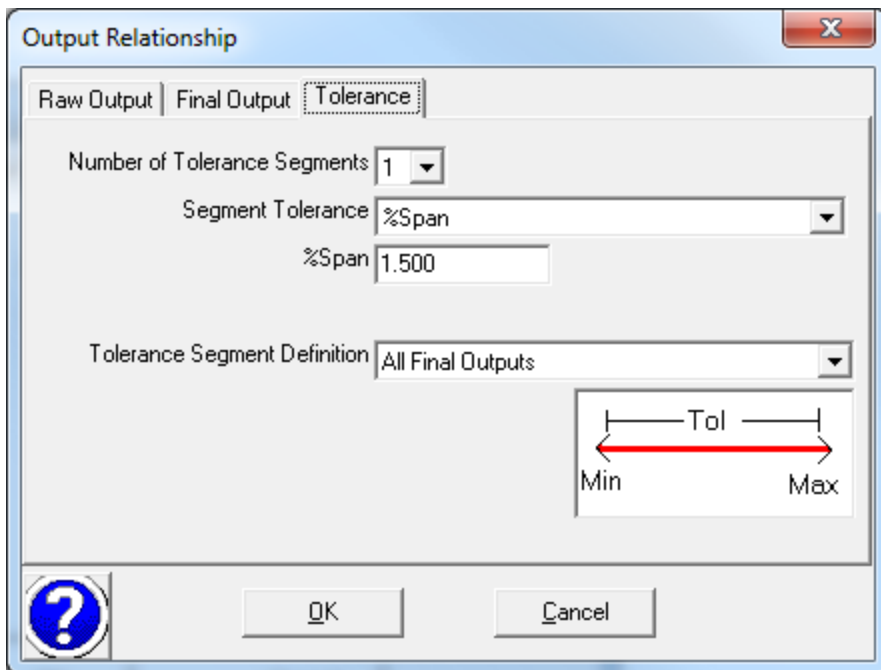
Unit: %RH [v]

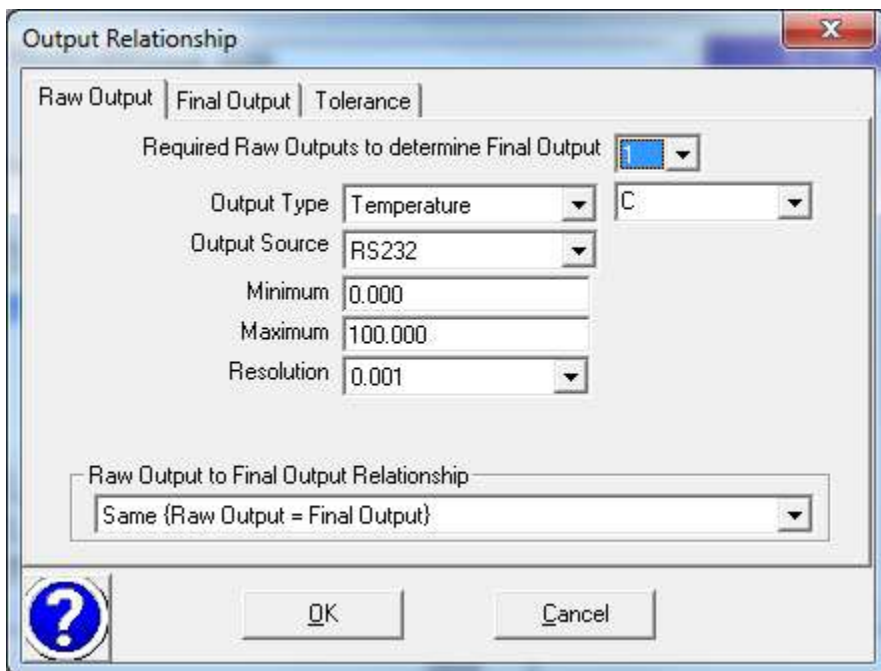
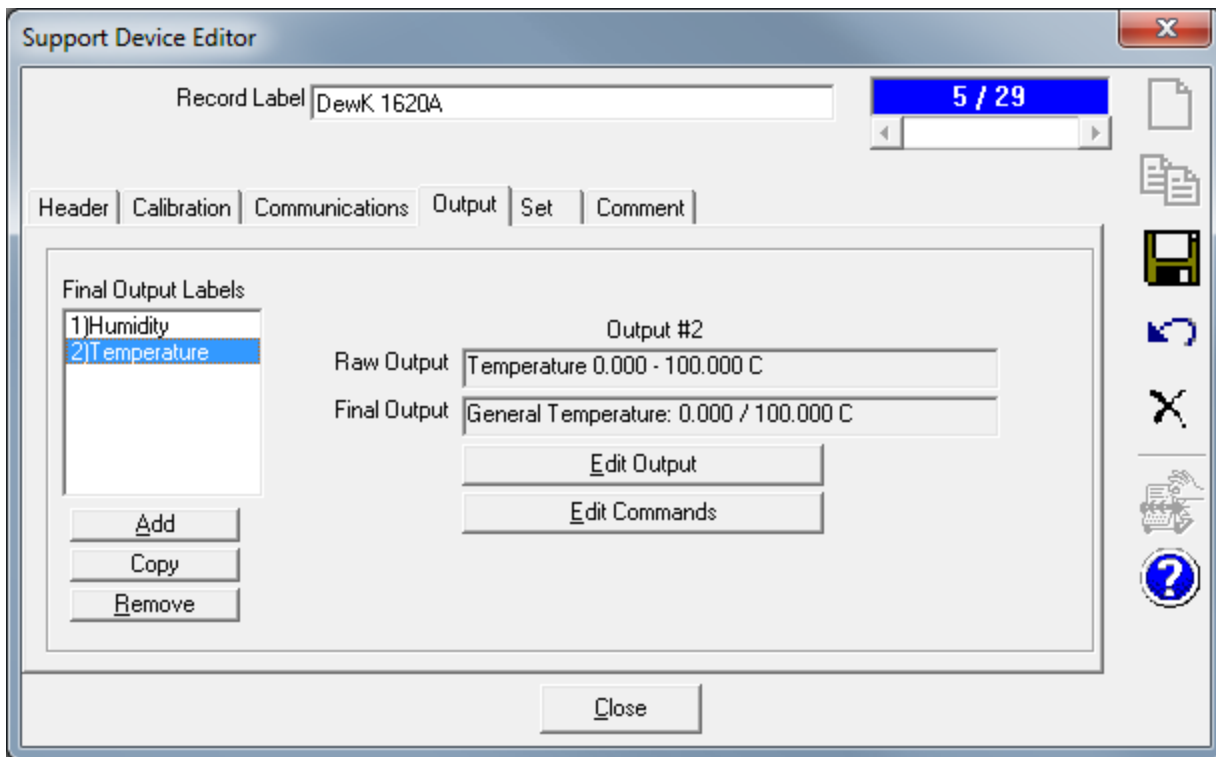
Minimum: 0.00

Maximum: 100.00

Resolution: 0.01 [v]

[?]    [OK]    [Cancel]





Output Relationship

Raw Output | Final Output | Tolerance

Label: Temperature

Output Type: Temperature

Final Output: General Temperature

Unit: C

Minimum: 0.000

Maximum: 100.000

Resolution: 0.001

Buttons: ? OK Cancel

Output Relationship


Raw Output | Final Output | Tolerance

Number of Tolerance Segments: 1

Segment Tolerance: %Span

%Span: 0.010

Tolerance Segment Definition: All Final Outputs



Buttons: ? OK Cancel

